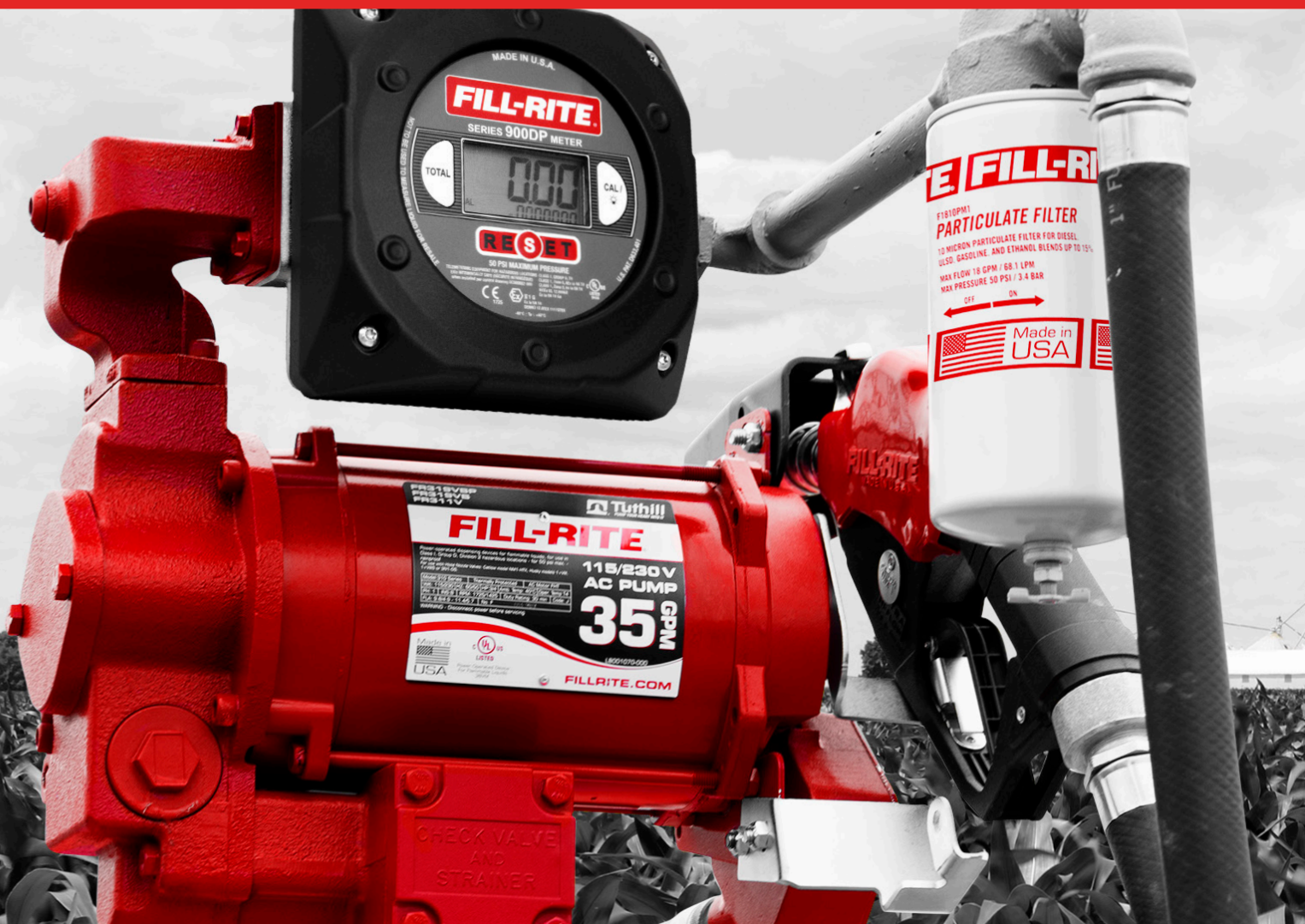




FILL-RITE®

SOTERA®





THE MOST TRUSTED NAME IN PUMPS AND METERS.

This statement is at the core of our brand promise. We work each day to make great products even better, and introduce new technologies to make fuel transfer easier, faster, and safer. Because of this, our bright red pumps are found on more farms and job sites around the world than any other brand.

Over the past few years we have introduced the industry's first UL listed portable fuel transfer pump for gasoline. We also brought you the industry's first DC, continuous duty fuel transfer pump, and with it, introduced nextec Intelligence®.

While nobody can predict the future, you can trust Fill-Rite and Tuthill to continue to lead the field in design and technology advancements.



TABLE OF CONTENTS

ABOUT US	1-5
NEW PRODUCTS	6-7, 14-15, 18-20
NX25	6-7, 14-15
FILL-RITE FMS (FUEL MANAGEMENT SYSTEM)	18-20
FUEL TRANSFER	6-28
DC PUMPS	6-12
AC PUMPS	13-17, 28
FMS	18-20
HAND PUMPS	21
METERS	22-25
ACCESSORIES	26-27
CABINET SYSTEMS	28
CHEMICAL TRANSFER	29-34
DC PUMPS	29-31
AC PUMPS	29, 31
METERS	32-33
HAND PUMPS	34
ACCESSORIES	34-35

**TUTHILL CORPORATION IS A PRIVATELY
HELD GLOBAL MANUFACTURER OF
INDUSTRIAL GOODS SPECIALIZING IN
ROTATING EQUIPMENT SUCH AS PUMPS,
METERS, VACUUM SYSTEMS AND BLOWERS.**

From heavy oils to motor fuels, from tomato paste to process gasses, from standard pressures to deep vacuums, we move it and measure it with reliability that's measured in decades. And that's only part of our story. The rest of our story lives within our people. Our Conscious

Company culture attracts and supports the kind of people who understand what our customers want and what they need - the kind of people who listen well and gain trust by following through on each and every commitment they make.

Customers who demand excellence are a gift to us, for it is through their reminders and their encouragement that we will one day grow to be counted among the world's Top 1% industrial companies.



COMPASS

OUR PURPOSE

WAKE THE WORLD

We invite a powerful aliveness. We make space for hearts - the original pumps - to thrive. When we come alive, the world comes along.

OUR VISION

A LEGION OF LIKE-HEARTED PEOPLE WITH ASTOUNDING IMPACT.

An ingenious company supporting flourishing families and spirited communities.

OUR MISSION

MAKING REAL THINGS THAT REALLY MAKE A DIFFERENCE.

From our hearts to our heads to our hands, we dare to make better.

OUR WAY

LIVING OUR COMMON VALUES. CREATING THE UNCOMMON.

A life full of curiosity, clarity, grit, grace, gratitude, and love.

OUR BRAND

IT'S WHO WE ARE, WHAT WE DO, AND WHAT WE SAY.

It all starts with me. Here. Now.



*THE HEART IS THE
ORIGINAL
PUMP*

ALL OF US ARE BORN WITH A PUMP INSIDE: OUR HEARTS. AS CHILDREN, THIS ORIGINAL PUMP FUELED OUR DREAMS AND OUR CREATIONS. AS ADULTS, OUR HEARTS CONTINUE TO THUMP, BUT ARE THEY TRULY THRIVING? AT OUR CORE, THE ENERGY IS STILL THERE. WE YEARN TO RELEASE IT – TO OPEN OUR EYES WIDER, REACH OUR ARMS OUT FARTHER, AND DO WHAT MAKES OUR HEARTS BEAT FASTER.

Tuthill has always been a company with heart. In our early days, we made the bricks that helped make Chicago, relying on horses to carry the clay. Some days, the heat and haul were too much for their hearts – and ours – to bear. So we created an oil pump to power a truck, saving our four-legged friends and laying the foundation for our future.

Today, we make pumps, blowers, and vacuums, daring to make them better every day. But the original pump – the heart – is still at our company's core. We're on a journey to become a Conscious Company, inviting the entire Tuthill community to come alive in everything we believe, say, and create. And we're extending that invitation beyond our walls. To have a seismic impact on our world, all hearts are vital. When our hearts are awake, our energy is contagious, and we make ripples that can move millions. The world needs people who are alive from the heart. Because when we come alive, the world comes along.

FILL-RITE®

NEW! NX25-DDC

For Gasoline / Diesel / B20 / E-15 / Kerosene

The industry's first
CONTINUOUS DUTY
fuel transfer pump



NX25-DDC Series Continuous Duty

Flow 25 GPM (95 LPM)

1 1/4" inlet | 1" outlet
2" NPT or BSPT tank mount, or foot mount
Cast iron pump housing

1/3 HP motor | Rated to -40°F/-40°C
Continuous duty for fuel transfer

Included Accessories

20' removable power cord | 35A fuse w/heavy duty holder | Elbow



NX25-DDCNB-PX	N	Bung mount, 20' power cable (10/3 awg)
NX25-DDCNB-AA	N	18' hose, ultra hi-flow nozzle, bung mount, 20' power Cable (10/3 awg)
NX25-DDCNF-PX	N	Foot mount, 20' power cable (10/3 awg) <i>(Pictured right)</i>
NX25-DDCNF-AA	N	18' hose, ultra hi-flow nozzle, foot mount, 20' power Cable (10/3 awg)
NX25-DDCBB-PX	B	Bung mount, 20' power cable (10/3 awg)
NX25-DDCBF-PX	B	Foot mount, 20' power cable (10/3 awg)





THE FUTURE OF FUEL TRANSFER IS HERE.

CONTINUOUS, ALL-DAY FUELING

- ✓ **CONTINUOUS DUTY** - Transfer fuel all day
- ✓ **TRUE 25 GPM** - High flow fuel transfer rates at the nozzle
- ✓ **INTELLIGENT TONES** - Indicate where attention is needed
- ✓ **VARIABLE SPEED MOTOR** - Optimize performance and improve suction lift
- ✓ **LIGHTWEIGHT** - Hassle-free installation
- ✓ **AUTO POWER DOWN AFTER 20 MINUTES** - Reduce energy costs
- ✓ **MAGNETIC SWITCH** - Smooth operation and field replaceable
- ✓ **SLOW DOWN IN BYPASS** - Reduce energy consumption
- ✓ **REMOTE ON/OFF** - Ideal for tall, above ground tanks
- ✓ **REDUCED VAPOR LOCK** - Keep running in harsh summer temperatures

nextec Intelligence® is an exclusive array of design advancements, technologies and user functionalities that take pump performance to unprecedented levels. Intelligent Tones™ inform when attention is needed. A variable speed motor automatically adjusts for peak performance with improved suction lift. More compact, lighter, and less amp draw—it sets a new standard for efficiency.



FILL-RITE®**12V Mobile DC Transfer Pumps**
For Gasoline / Diesel / B20 / E-15 / Kerosene / Mineral Spirits**FR4200 Series Heavy Duty****Flow 20 GPM (75 LPM)**1" inlet | 1" outlet
2" NPT or BSPT tank mount
Cast iron pump housing1/4 HP motor | 19 amp draw
30-minute duty cycle
8' suction lift, maximum**Included Accessories**

12' hose | 18' 12-gauge 2-wire battery cable | 5' ground wire | Telescoping steel suction pipe 20" to 34 1/2" | 90° Street Elbow, Gal.

FR4204H	N	Pump only, ground wire, elbow *Accessories not included
FR4210H	N	Manual nozzle
FR4210HB	N	Ultra high flow automatic nozzle (truck stop spout)
FR4210HD	N	Automatic high flow nozzle (green cover)
FR4210HDS	N	Automatic high flow nozzle (green cover), 1" multiplane swivel
FR4211H	N	Manual nozzle, 901C gallon meter <i>(Pictured below)</i>
FR4211HL	N	Manual nozzle, 901CL liter meter
FR4219H	N	Manual nozzle, TT10AN meter
FR4210HBFQ	N	18' hose, Ultra high flow automatic nozzle (truck stop spout), 25' 10-gauge 2-wire battery cable with clamps, 30 micron particulate filter, Filter head with hardware
FR4210HARC	NA	Arctic 20' Hose, Automatic arctic nozzle (lead spout/blue cover), 1" multiplane swivel

Included Accessories

3.6 m Hose | 5.5 m 3-wire battery cable | 1.5 m ground wire with clip | Telescoping steel suction pipe 51-88 cm

FR4205HE	B	Pump with 1" BSPP discharge, 1" BSPP suction port, 2" BSPT tank mount only *Accessories not included
FR4210HE	N	Manual nozzle
FR4210HEB	N	Ultra high flow automatic nozzle (truck stop spout)
FR4211HE	N	Manual nozzle, 901C gallon meter
FR4211HEL	N	Manual nozzle, 901CL liter meter
FR4211HEBL	N	Ultra high flow automatic nozzle (truck stop spout), 901CL liter meter



FR1200 Series Heavy Duty

Flow 15 GPM (57 LPM)

1" inlet | 3/4" outlet
2" NPT or BSPT tank mount
Cast iron pump housing

1/4 HP motor | 20 amp draw
30-minute duty cycle
8' suction lift, maximum (*diesel*)



Included Accessories

12' hose | 18' 12-gauge 2-wire battery cable | 5' ground wire | Telescoping steel suction pipe 20" to 34 1/2" | 90° Street Elbow, Gal.

FR1204H	N	Pump, ground wire, elbow *Accessories not included
FR1210H	N	Manual nozzle (<i>Pictured right</i>)
FR1210HA	N	Automatic nozzle (unleaded spout/red cover)
FR1210HA1	N	Automatic nozzle (leaded spout/green cover)
FR1211H	N	Manual nozzle, 807C gallon meter
FR1211HL	N	Manual nozzle, 807C liter meter
FR1219H	N	Manual nozzle, TT10AN meter
FR1210HARC	NA	Arctic 15' Hose, Automatic arctic nozzle (leaded spout/blue cover), 3/4" multiplane swivel



Included Accessories

3.6 m Hose | 5.5 m 3-wire battery cable | 1.5 m ground wire with clip | Telescoping steel suction pipe 51-88 cm

FR1205HE	B	Pump with 3/4" BSPP discharge, 1" BSPP suction port, 2" BSPT tank mount only *Accessories not included
FR1210HE	N	Manual nozzle
FR1210HEA	N	Automatic nozzle (unleaded spout/red cover)
FR1211HE	N	Manual nozzle, 807C gallon meter
FR1211HEL	N	Manual nozzle, 807C liter meter (<i>Pictured right</i>)
FR1211HELA	N	Automatic nozzle (unleaded spout/red cover), 807C liter meter

SD1200 Series Standard Duty

Flow 13 GPM (49 LPM)

1" inlet | 3/4" outlet
2" NPT tank mount
Cast iron pump housing

1/4 HP motor | 20 amp draw
30 minute duty cycle



Included Accessories

10' hose | 15' 12-gauge 2-wire battery cable | 5' ground wire | 2-piece suction pipe 15 1/4" to 29 1/4" | 90° Street Elbow, Gal.

SD1202H	N	Manual nozzle (<i>Pictured right</i>)
SD1202HA	N	Automatic nozzle (unleaded spout/red cover)



FILL-RITE®**24V DC Mobile Transfer Pumps**

For Gasoline / Diesel / B20 / E-15 / Kerosene

FR2400 Series Heavy Duty**Flow 15 GPM (57 LPM)**1" inlet | 3/4" outlet
2" NPT or BSPT tank mount
Cast iron pump housing1/4 HP motor | 10 amp draw
30-minute duty cycle
8' suction lift, maximum (*diesel*)**Included Accessories**

12' hose | 18' 12-gauge 2-wire battery cable | 5' ground wire | Telescoping steel suction pipe 20" to 34 1/2" | 90° Street Elbow, Gal.

FR2404H **N** Pump, ground wire, elbow *Accessories not includedFR2410H **N** Manual nozzleFR2411H **N** Manual nozzle, 807C gallon meter (*Pictured below*)FR2411HL **N** Manual nozzle, 807C liter meter**Included Accessories**

3.6 m Hose | 5.5 m 3-wire battery cable | 1.5 m ground wire with clip | Telescoping steel suction pipe 51-88 cm

FR2405HE **B** Pump, ground wire, elbow, and cable only with 3/4" BSPP discharge, 1" BSPP suction port, 2" BSPT tank mountFR2410HE **N** Manual nozzleFR2410HEL **N** Manual nozzle, 807C liter meterFR2410HEA **N** Automatic nozzle (unleaded spout/red cover)FR2410HELA **N** Automatic nozzle (unleaded spout/red cover), 807C liter meter**FR4400 Series Heavy Duty****Flow 20 GPM (75 LPM)**1" inlet | 1" outlet
2" NPT or BSPT tank mount
Cast iron pump housing1/4 HP motor | 13 amp draw
30-minute duty cycle
8' suction lift, maximum (*diesel*)**Included Accessories**

12' hose | 18' 12-gauge 2-wire battery cable | 5' ground wire | Telescoping steel suction pipe 20" to 34 1/2" | 90° Street Elbow, Gal.

FR4410H **N** Manual nozzle**Accessories**

5.5 m 3-wire battery cable | 1.5 m ground wire with clip

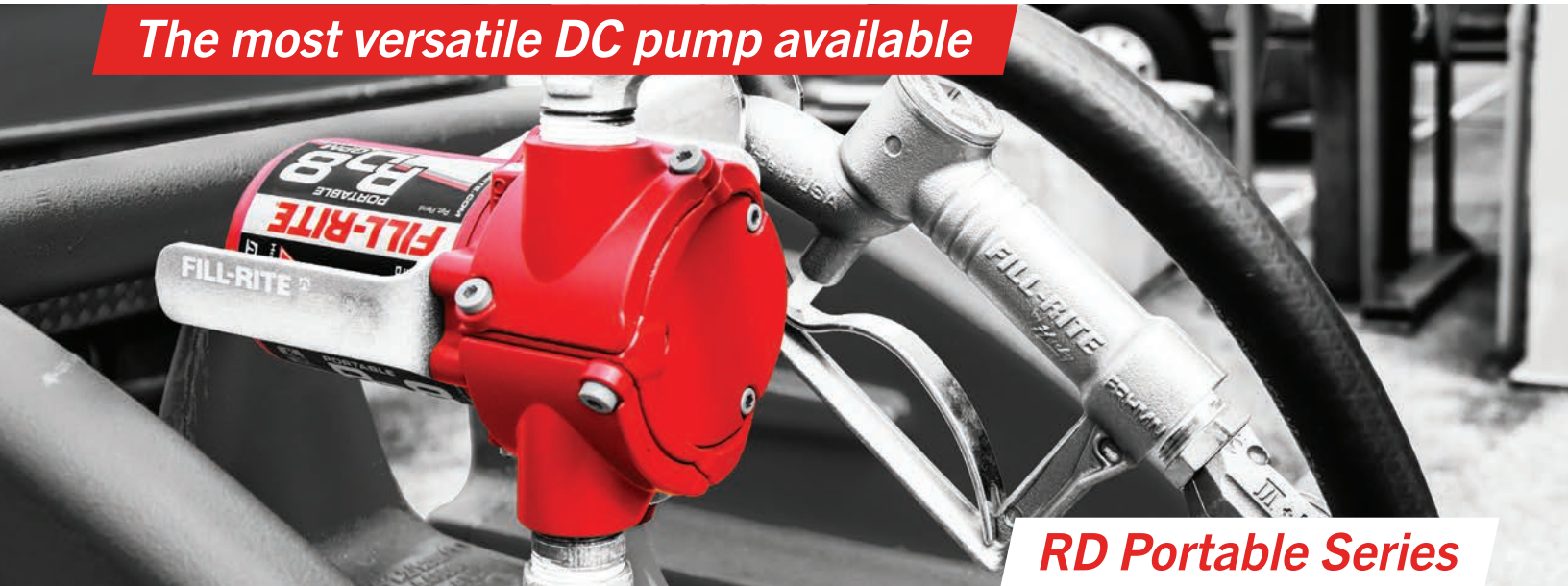
FR4405HE **B** 1" BSPP discharge, 1" BSPP suction port, 2" BSPT tank mount, 1.5 m ground wire with clip

FILL-RITE®

12V Portable DC Transfer Pumps

For Gasoline / Diesel / B20 / E-15 / Kerosene

The most versatile DC pump available



RD Portable Series



CONFIGURABLE FLANGES

Position the inlet and outlet hoses to fit your needs. Remove two bolts and rotate the flange.



QUICK CONNECT POWER CORD

Simple, quick and safe connection to your power source.

ALUMINUM CONSTRUCTION

Pump weighs only 7 lbs.



MULTIPLE MOUNTING OPTIONS

Bung mount, foot mount, or handheld; versatile enough to fit your application.



RD Portable Series Heavy Duty**Flow 12 GPM (45 LPM)**

3/4" inlet | 3/4" outlet
Multiple mounting options
Aluminum construction

1/6 HP motor | 14 amp draw
30-minute duty cycle

Included Accessories

3/4" x 8' discharge hose | 6' suction hose | 10' quick connect power cord with battery clips

RD1212NN	N	Power cord and pump only *Accessories not included
RD1212NH	N	Manual nozzle (Pictured below)
RD1212NP	N	Manual nozzle, 23"-41" Telescoping suction tube, Nozzle boot, Bung mount tank adapter

Included Accessories

4.5 m quick connect power cord with battery clips

RD1212BN	B	Power cord and pump only *Accessories not included
----------	----------	--

Flow 8 GPM (30 LPM)

3/4" inlet | 3/4" outlet
Multiple mounting options
Aluminum construction

1/6 HP motor | 14 amp draw
30-minute duty cycle

Included Accessories

5/8" x 8' discharge hose | 6' suction hose | 10' quick connect power cord with battery clips

RD812NN	N	Power cord and pump only *Accessories not included
RD812NH	N	Manual nozzle (Pictured right)
RD812NP	N	Manual nozzle, 23"-41" Telescoping suction tube, Nozzle boot, Bung mount tank adapter

**Included Accessories**

4.5 m quick connect power cord with battery clips

RD812BN	B	Power cord and pump only *Accessories not included
---------	----------	--

1600 Series Standard Duty

Compatible with Diesel fuels only

Flow 10 GPM (38 LPM)

3/4" inlet | 3/4" outlet
Cast iron pump housing

1/5 HP motor | 17 amp draw
30-minute duty cycle

Included Accessories

6' 12-gauge 2-wire battery cable with clips and 30 amp fuse

FR1612	N	Pump Only *Accessories not included
FR1614	N	Plastic nozzle, 8' PVC suction and discharge hoses, Inlet strainer, 2 Hose barbs, 4 Hose clamps
FR1616	N	Plastic nozzle, 21"-38 1/2" Poly telescoping suction pipe, 8' Discharge PVC hose, 1 Hose barb, 2 Hose clamps



FILL-RITE®

115V AC Fixed Transfer Pumps

For Gasoline / Diesel / B20 / E-15 / Kerosene



FR600 Series Heavy Duty

Flow 15 GPM (57 LPM)

1" inlet | 3/4" outlet
2" NPT or BSPT tank mount
Cast iron pump housing

1/6 HP motor | 2 amp draw
30-minute duty cycle
6.5' suction lift (*diesel*)



Included Accessories

12' hose | Telescoping steel suction pipe 20" to 34 1/2" | 90° Street Elbow, Gal.

FR604H	N	Pump only with elbow *Accessories not included
FR610H	N	Manual nozzle
FR610HA	N	Automatic nozzle (unleaded spout/red cover) (<i>Pictured right</i>)



SD600 Series Standard Duty

Flow 13 GPM (49 LPM)

1" inlet | 3/4" outlet
2" NPT tank mount
Cast iron pump housing

1/6 HP motor | 2 amp draw
30-minute duty cycle



Included Accessories

12' hose | 3-piece suction pipe 15 1/4" to 43 1/4" | 90° Street Elbow, Gal.

SD602H	N	Manual nozzle
--------	---	---------------



FILL-RITE®**NEW! NX25-120/240**

For Gasoline / Diesel / B20 / E-15 / Kerosene



The industry's first
CONTINUOUS DUTY
fuel transfer pump

NX25-120/240 Series Continuous Duty**Flow 25 GPM (95 LPM)**

1 1/4" inlet | 1" outlet
NPT or BSPT tank mount, or foot mount
Cast iron pump housing

1/3 HP motor | Rated to -40°F/-40°C
Continuous duty for fuel transfer
3.5 amp draw | 14' lift (*diesel*)



NX25-120NB-PX	N	120V pump only, bung mount
NX25-120NB-AA	N	120V pump, bung mount, 18' hose, ultra hi-flow nozzle
NX25-120NB-AB	N	120V pump, bung mount, 18' hose, ultra hi-flow nozzle, 900CD meter
NX25-120NB-AC	N	120V pump, bung mount, 18' hose, ultra hi-flow nozzle, 900CDP meter
NX25-120NB-AD	N	120V pump, bung mount, 20' arctic hose, arctic auto nozzle
NX25-120NB-AE	N	120V pump, bung mount, 20' arctic hose, arctic auto nozzle, 900CD meter
NX25-120NF-PX	N	120V pump only, foot mount (<i>Pictured right</i>)
NX25-120NF-AA	N	120V pump, foot mount, 18' hose, ultra hi-flow nozzle
NX25-240NF-PX*	N	240V pump only, foot mount
NX25-240BF-PX*	B	240V pump only, foot mount
NX25-240BB-PX*	B	240V pump only, bung mount



*NX25-240 coming soon

N - NPT threads B - BSPP threads

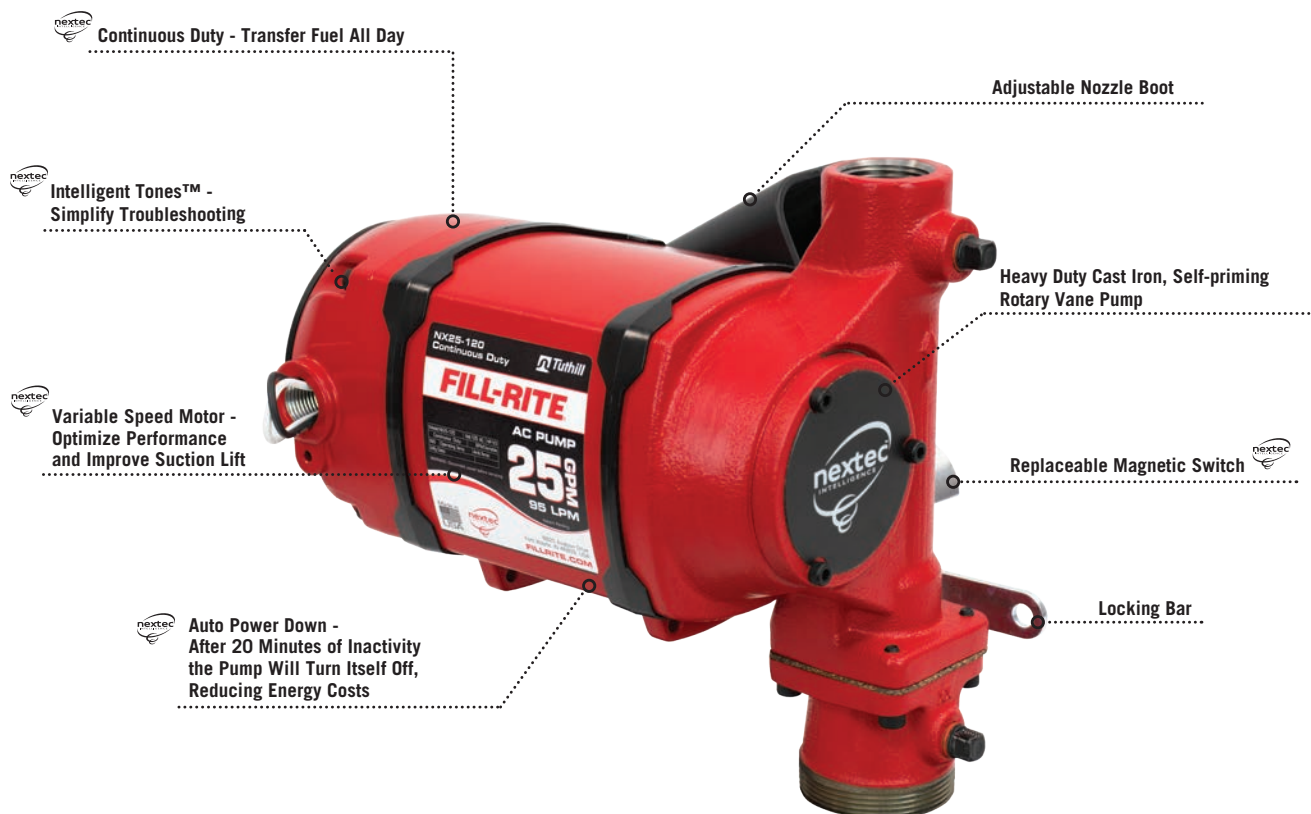


THE FUTURE OF FUEL TRANSFER IS HERE.

CONTINUOUS, ALL-DAY FUELING

- ✓ **CONTINUOUS DUTY** - Transfer fuel all day
- ✓ **TRUE 25 GPM** - High flow fuel transfer rates at the nozzle
- ✓ **INTELLIGENT TONES** - Indicate where attention is needed
- ✓ **VARIABLE SPEED MOTOR** - Optimize performance and improve suction lift
- ✓ **LIGHTWEIGHT** - Hassle-free installation
- ✓ **AUTO POWER DOWN AFTER 20 MINUTES** - Reduce energy costs
- ✓ **MAGNETIC SWITCH** - Smooth operation and field replaceable
- ✓ **SLOW DOWN IN BYPASS** - Reduce energy consumption
- ✓ **REMOTE ON/OFF** - Ideal for tall, above ground tanks
- ✓ **REDUCED VAPOR LOCK** - Keep running in harsh summer temperatures

nextec Intelligence® is an exclusive array of design advancements, technologies and user functionalities that take pump performance to unprecedented levels. Intelligent Tones™ inform when attention is needed. A variable speed motor automatically adjusts for peak performance with improved suction lift. More compact, lighter, and less amp draw—it sets a new standard for efficiency.



FILL-RITE®**115/230V AC Fixed Transfer Pumps**
For Diesel / B20 / Kerosene**High flow great for fueling fleets****For fixed tanks used in farming or construction****FR300 Series Heavy Duty****Flow 35 GPM (132 LPM)**1 1/4" inlet | 1" outlet
2" NPT or BSPT tank mount
Cast iron pump housing3/4 HP motor | Anti-siphon ready
30-minute duty cycle
18' suction lift (*diesel*)**Included Accessories****2" bung adapter | Check valve | Pressure relief valve | Strainer | Elbow**

FR300VN	N	Pump only *Accessories not included (20 GPM/75 LPM, 1/2 HP motor)
FR303V	N	For use with AST remote pumps (20 GPM/75 LPM, 1/2 HP motor)
FR310VARC	NA	20' arctic hose, Automatic arctic nozzle (unleaded spout/blue cover)
FR310VB	N	18' hose, Ultra high flow automatic nozzle (truck stop spout)
FR310VN	N	Pump only *Accessories not included
FR311VB	N	18' hose, Ultra high flow automatic nozzle (truck stop spout), 901C gallon mechanical meter
FR311VLB	N	18' hose, Ultra high flow automatic nozzle (truck stop spout), 901CL liter mechanical meter
FR311VN	N	Pump only with 901C gallon mechanical meter
FR311VLN	N	Pump only with 901CL liter mechanical meter
FR313V	N	For use with AST remote pumps (<i>DIESEL ONLY SYSTEM</i>)
FR319VB	N	18' hose, Ultra high flow automatic nozzle (truck stop spout), 900CD digital meter
FR319VBP	N	18' hose, Ultra high flow automatic nozzle (truck stop spout), 900CDP digital meter with integrated pulse output

Included Accessories**2" bung adapter | Check valve | Pressure relief valve | Strainer | Elbow**

FR310VEN	N	Pump only *Accessories not included
FR311VELN	B	901CL liter mechanical meter
FR310VEMN	B	Pump only *Accessories not included
FR311VELMN	B	901CL liter mechanical meter

FILL-RITE®

115/230V AC Fixed Transfer Pumps For Gasoline / Diesel / B20 / E-15 / Kerosene

FR700 Series Heavy Duty

Flow 20 GPM (75 LPM)

1 1/4" inlet
2" NPT or BSPP tank mount
Cast iron pump housing

Anti-siphon ready
30-minute duty cycle
15' suction lift (*diesel*)



Included Accessories

2" bung adapter | Check valve | Pressure release valve | Strainer | Elbow

FR700V	N	115V AC power, 3/4" outlet, Manual nozzle, 12' hose
FR701V	N	115V AC power, 3/4" outlet, Manual nozzle, 807C gallon mechanical meter, 12' hose (<i>Pictured below</i>)
FR701VL	N	115V AC power, 3/4" outlet, Manual nozzle, 807CL liter mechanical meter, 12' hose
FR710VB	N	115V AC power, 1" outlet, Ultra high flow automatic nozzle (truck stop spout)
FR710VN	N	115V AC power, 1" outlet, *Accessories not included
FR711VA	N	115V AC power, 1" outlet, Ultra high flow automatic nozzle (truck stop spout), 901C gallon mechanical meter, 18' hose
FR711VLA	N	115V AC power, 1" outlet, Ultra high flow automatic nozzle (truck stop spout), 901CL liter mechanical meter, 18' hose
FR711VBD	N	115V AC power, 1" outlet, Ultra high flow automatic nozzle (truck stop spout), 900CD digital meter
FR713V	N	115V AC power, for use with AST remote dispensers

Included Accessories

3.6 m hose | 2" bung adapter | Check valve | Pressure relief valve | Strainer | Elbow

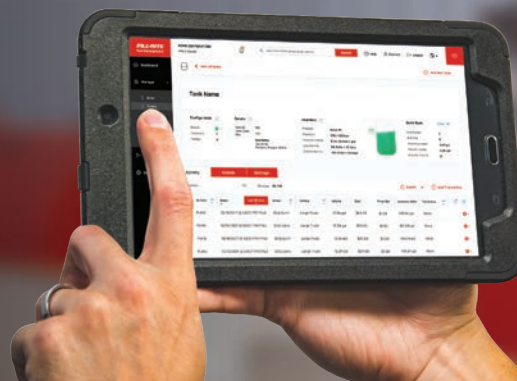
FR713VE	N	230V AC power, for use with AST remote pumps
---------	---	--





NEW! Fuel Management System
fillrite.com/fms

**The Last FMS
You'll Ever Need**



Hardware

Low cost, full featured | Constant connectivity
Easy, modular installation

Small footprint, big functionality
2-year warranty



Fill-Rite FMS hardware is compatible with most existing fuel pumps and meters.
Installation is quick and simple and designed to scale with your business needs.

NXFM100	Site controller
NXFM150	5 hose expansion module

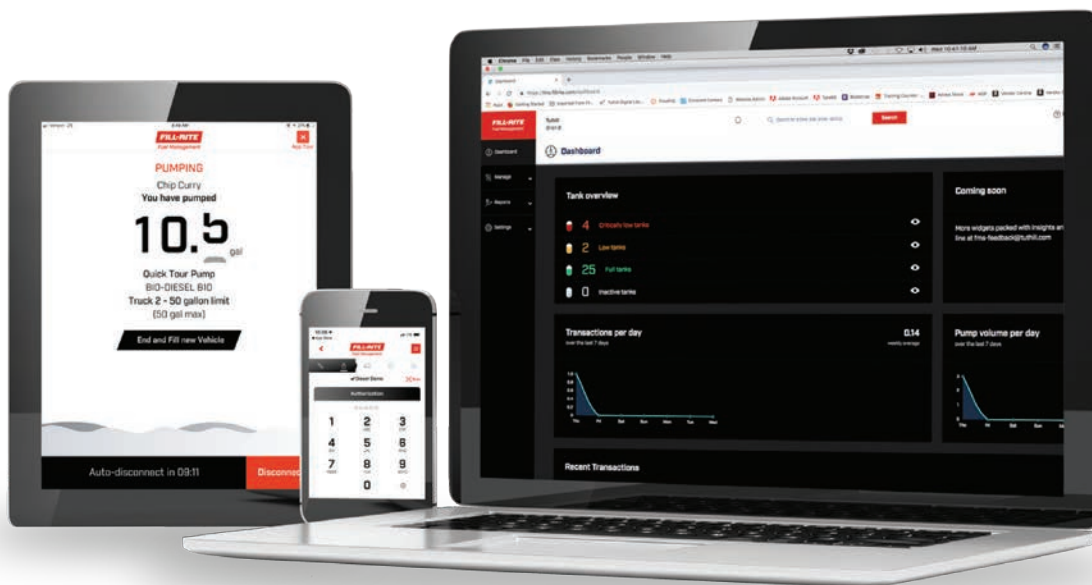
Accessories

NXFMPE	Full Pedestal Assembly, FMS; includes FMXENC, FMIPAD, FMSIPADCS, FMPED
FMXENC	Extreme Temp Tablet Enclosure
FMIPAD	Standard Apple iPad with 32GB Memory and Cellular Ready
FMSIPADCS	Protective iPad Case
FMPED	Pedestal Only

Extended Antennas

FMSANT05	2.4GHz 5dB Wi-Fi Antenna; SMA with SMA to uFL Adapter, 5 ft. Cable
FMSANT15	2.4GHz 5dB Wi-Fi Antenna; SMA with SMA to uFL Adapter, 15 ft. Cable
FMSANT35	2.4GHz 5dB Wi-Fi Antenna; SMA with SMA to uFL Adapter, 35 ft. Cable





Mobile App

Use devices you already have
Secure your pumps

Say goodbye to pen and paper
Better fuel attribution

The app works with Android and iOS devices you use every day. Fuel access is gated behind driver-specific pin codes, helping protect you from theft and unauthorized transactions.



Web Portal

Customized, automated reports and paperwork
Instant visibility into all of your tanks

Advanced inventory management
Cloud-based software

Fill-Rite's web portal serves as your all-in-one fuel dashboard. Check inventory, run reports, and manage pump permissions from one place.

Your fuel data is available any time, anywhere, on any computer through your Fill-Rite FMS account. View real-time transactions and push out automatic updates to prevent fraud and control fuel use.

DOWNLOAD THE FREE "FILL-RITE FMS" APP NOW!
Try the demo to see just how easy full featured fuel management can be!



bit.ly/38gH5ck

**REGISTER FOR THE
FREE WEBINAR**
to learn about the best fuel
management tool in the industry

POWERFUL INNOVATION

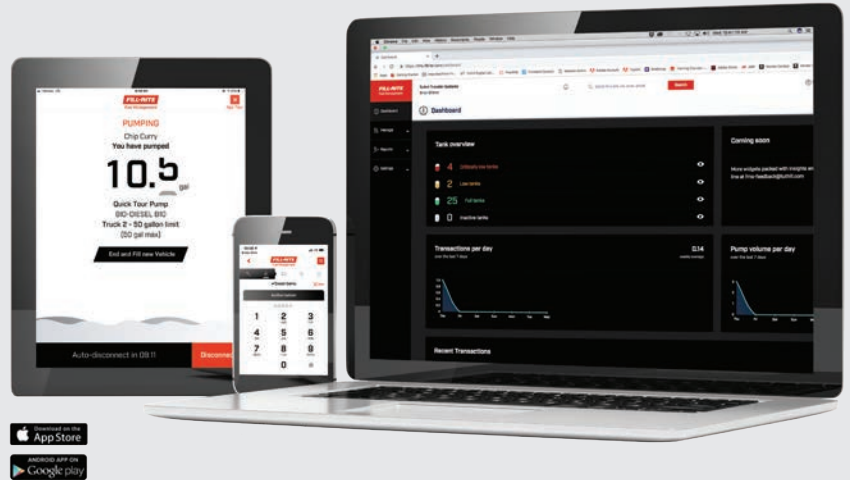
Solve all your fuel transfer needs with one simple solution



Fuel Management System

Fill-Rite's Fuel Management System (FMS) combines hardware, a mobile application, and a web portal to give users real-time control over their fuel. The average Fill-Rite FMS user saves over \$20K* annually using the tax refund feature alone!

*average savings based on 2019 analysis



REGISTER FOR THE FREE WEBINAR

to learn about the best fuel management tool in the industry



bit.ly/38gH5ck



NX25-120NB-AC with Pulse Output

NOW AVAILABLE

Learn more and get a quote at
info.tuthill.com/nx-launch



FILL-RITE®

Contact your Fill-Rite representative today



800.634.2695 | 8825 Aviation Dr., Fort Wayne, IN 46809



FILL-RITE®

Hand Pumps

For Gasoline / Diesel / B20 / E-15 / Kerosene

Piston Hand Pumps

20 Gallons/100 Strokes

1" inlet | 3/4" outlet
2" NPT bung mount

Cast aluminum housing
47" suction lift (*diesel*)

Included Accessories

Vacuum breaker | Telescoping steel suction pipe 20" to 34 1/2"

FR150	N	Pump only w/ vacuum breaker *Accessories not included
FR151	N	Pail spout
FR152	N	Nozzle spout, 8' hose (<i>Pictured right</i>)
FR156	N	807C gallon meter, Nozzle spout, 8' hose

11 Ounces/1 Stroke

1" inlet | Spout outlet
2" NPT bung mount

Included Accessories | Fluid Compatibility | Materials of Construction

FR20V	N	Polypropylene telescoping suction pipe 19 3/4" to 35 1/2" Light oils, anti-freeze, coolant, hydraulic oils Polypropylene housing
SD11	N	Pail spout, No drip valve, Telescoping steel suction pipe 20" to 34 1/2" Light oils, antifreeze, hydraulic fluid, diesel, kerosene Steel housing



Rotary Hand Pumps

10 Gallons/100 Revolutions

1" inlet | 3/4" outlet
2" NPT bung mount

Cast aluminum housing
47" suction lift (*diesel*)

Included Accessories

Vacuum breaker | Telescoping steel suction pipe 20" to 34 1/2"

FR110	N	Pump only w/ vacuum breaker *Accessories not included
FR112	N	Nozzle spout, 8' hose
FR112C	N	Gallon counter, Nozzle spout, 8' hose
FR112CL	N	Liter counter, Nozzle spout, 8' hose
FR113	N	Pail spout

7.5 Gallon/100 Strokes

3/4" inlet | Spout outlet
2" NPT bung mount

Cast iron housing

Included Accessories

Compatible with diesel, kerosene, machine oil, fuel oil, petroleum products

SD62	N	Pail spout, 3-piece steel suction pipe 13" to 39" (<i>Pictured right</i>)
------	---	---



FILL-RITE®

In-line Digital Turbine Meter

For Gasoline / Diesel / Kerosene / Mineral Spirits



TT10 Series In-line Digital Turbine Meters

Flow 2-35 GPM (8-132 LPM)

+/-1% accuracy

1" inlet | 1" outlet NPT or BSPP threads

Impact damage resistance

User replaceable batteries (2 AA)

Easy field calibration | Memory backup

Install in-line, hose-end, or at the pump



Included Accessories | Additional Compatible Fluids | Materials of Construction

TT10AN	N	3/4" reducer bushings (2) Jet fuel, heptane, gasoline, diesel Aluminum
TT10ANC	N	E85, B100 biodiesel, non-potable water, jet fuel, lavatory water, gasoline, diesel Nickel-plated aluminum
TT10AB	B	Jet fuel, heptane, gasoline, diesel Aluminum
TT10ABC	B	E85, B100 biodiesel, non-potable water, jet fuel, lavatory water, gasoline, diesel Nickel-plated aluminum



FILL-RITE®

Digital Display Meters

For Gasoline / Diesel / Biodiesel / E15 / Kerosene /
Heptanes / Stoddard Solvents / Mineral Spirits

900 Series Digital Meters

Flow 6-40 GPM (23-151 LPM)

+/-1.25% accuracy rating

1" | 1.5" inlet/outlet - NPT or BSPT threads

Memory backup in case of power failure

Field/factory calibration

90° movable electronic head

Powered by 2 AA batteries



Included Accessories | Inlet/Outlet Size

900CD	N	1" inlet/outlet (Pictured below right)
900CD1.5	N	1.5" inlet/outlet
900CDBSPT	B	1" inlet/outlet
900CD1.5BSPT	B	1.5" inlet/outlet
900CDP	N	Intrinsically safe barrier, pulse output 1" inlet/outlet (Pictured below left)
900CDPBSPT	B	Intrinsically safe barrier, pulse output 1" inlet/outlet
900CDP1.5	N	Intrinsically safe barrier, pulse output 1.5" inlet/outlet
900CDP1.5BSPT	B	Intrinsically safe barrier, pulse output 1.5" inlet/outlet
900CDPX	N	Pulse output 1" inlet/outlet (Not for explosive atmospheres)
900CDPX1.5	N	Pulse output 1.5" inlet/outlet (Not for explosive atmospheres)
900CDPXBSP	B	Pulse output 1" inlet/outlet (Not for explosive atmospheres)
900CDPX1.5BSPT	N	Pulse output 1.5" inlet/outlet (Not for explosive atmospheres)



820 Series Nutating Disc Meter

Compatible with Water, Diesel, and Mild Chemicals

Flow 2-20 GPM (8-75 LPM)

+/-0.5% accuracy rating

1" NPT inlet/outlet

Factory/field calibration

Powered by 2 AA batteries

DEF Compatible



820 **N** Meter only

FILL-RITE®**Mechanical Meters**

For Gasoline / Diesel / B20 / E15 / Kerosene

4-Wheel Mechanical Meters**Flow 6-40 GPM - Gallon register**+/-2% accuracy rating
Aluminum construction**Included Accessories | Inlet/Outlet Size**

901C	N	1" inlet/outlet
901C1.5	N	1.5" inlet/outlet
901CMK300	N	Includes fittings and castings to mount on FR300 series pumps 1" inlet/outlet
901CMK300V	N	Includes fittings and castings to mount on FR300V and FR700V series pumps 1" inlet/outlet (Pictured above)
901CMK4200	N	Includes fittings and castings to mount on FR4200 and FR710 series pumps 1" inlet/outlet
901CN1.5	N	Fluorocarbon seals 1.5" inlet/outlet (Nickel-plated meter also compatible with biofuels)

Flow 23-151 LPM - Liter register+/-2% accuracy rating
Aluminum construction

901CL	N	1" inlet/outlet
901CLX418	B	1" inlet/outlet
901CL1.5	N	1.5" inlet/outlet (Pictured above)
901CL1.5X418	B	1.5" inlet/outlet (Pictured above)
901CLMK300	N	Includes fittings and castings to mount on FR300 series pumps 1" inlet/outlet
901CLMK300V	N	Includes fittings and castings to mount on FR300V and FR700V series pumps 1" inlet/outlet
901CLMK4200	N	Includes fittings and castings to mount on FR4200 and FR710 series pumps 1" inlet/outlet
901CLN1.5	N	Fluorocarbon seals 1.5" inlet/outlet (Nickel-plated meter also compatible with biofuels)
901CLN1.5X418	B	1.5" inlet/outlet (Nickel-plated meter also compatible with biofuels)

3-Wheel Mechanical Meters**Flow 5-20 GPM - Gallon register**+/-1% accuracy rating
Aluminum construction**Included Accessories | Inlet/Outlet Size**

806C	N	1" inlet/outlet (Gravity feed model Pictured above)
807C	N	3/4" inlet/outlet
807C1	N	1" inlet/outlet
807CMK	N	Includes fittings to mount on FR1200, FR2400, FR600, SD600, SD1200, and FR700V series pumps 3/4" inlet/outlet
807CN1	N	1" inlet/outlet (Nickel-plated meter also compatible with biofuels)

3-Wheel Mechanical Meters continued

Flow 19-75 LPM - *Liter register*

+/-1% accuracy rating
Aluminum construction



806CL	N	1" inlet/outlet (<i>Gravity feed model</i>)
807CL	N	3/4" inlet/outlet
807CLX418	B	
807CL1	N	1" inlet/outlet
807CL1X418	B	
807CLMK	N	Includes fittings to mount on FR1200, FR2400, FR600, SD600, SD1200, and FR700V series pumps 3/4" inlet/outlet
807CLN1	N	1" inlet/outlet (<i>Nickel-plated meter also compatible with biofuels Pictured above</i>)
807CNL1X418	B	1" inlet/outlet (<i>Nickel-plated meter also compatible with biofuels</i>)

TN Series Meters

Fluid compatibility varies per model



Flow 0.5-15 GPM (1.5-57 LPM)

+/-2% accuracy rating
1" | 1.5" NPT or BSPP inlet/outlet

TN740 - Max pressure 1,000 PSI / 69 bar

TN760 - Max pressure 400 PSI / 28 bar

Fluid Register | Flow Rate | Inlet/Outlet Size

For use with high viscosity lube oils

TN740AN1CAA1LAI	N	Liter register 1.5-40 LPM 1" inlet/outlet
TN740AN1CAA1TAI	N	Gallon register 0.5-10 GPM 1" inlet/outlet
TN740AN1CBA1LAI	B	Liter register 1.5-40 LPM 1" inlet/outlet
TN760AN1CAB1GAF	N	Gallon register 0.6-15 GPM 1.5" inlet/outlet (<i>Pictured right</i>)
TN760AN1CAB1LAF	N	Liter register 2.3-57 LPM 1.5" inlet/outlet
TN760AN1CBB1LAF	B	Liter register 2.3-57 LPM 1.5" inlet/outlet



Flow 6-60 GPM (23-230 LPM)

+/-2% accuracy rating
1.5" NPT or BSPP inlet/outlet

Max pressure 150 PSI / 10 bar

Fluid Register | Compatible Fluids

TN860AN1CAB1GAC	N	Gallon register Diesel, biodiesel, jet fuel, kerosene
TN860AN1CAB1GAC-RL	N	Gallon register Diesel, biodiesel, jet fuel, kerosene (<i>right-to-left flow</i>)
TN860AN1CAB1LAC	N	Liter register Diesel, biodiesel, jet fuel, kerosene
TN860AN1CAB2GAC	N	Gallon register Gasoline, water
TN860AN1CAB2GBC	N	Gallon register E85, E100, ALS, solvents
TN860AN1CAB2LAC	N	Liter register Gasoline, water
TN860AN1CAB2LBC	N	Liter register E85, E100, ALS, solvents
TN860AN1CBB1LAC	B	Liter register Diesel, biodiesel, jet fuel, kerosene
TN860AN1CBB2LAC	B	Liter register Gasoline, water
TN860AN1CBB2LBC	B	Liter register E85, E100, ALS, solvents



FILL-RITE®**UL LISTED NOZZLES****Nozzles**Viton seals and O-rings
Integral hanging hook50 PSI | 3.4 bar
Rated to -20°F/-28°C

Available in 1" and 3/4" NPT

**1" Ultra High Flow Automatic Nozzles**

Compatible with gasoline, diesel, E15, biodiesel to B20, and kerosene

N100DAU13	N	Red cover 5-40 GPM (19-150 LPM) (Pictured right)
N100DAU13G	N	Green cover 5-40 GPM (19-150 LPM) (Pictured right)
N100DAU13Y	N	Yellow cover 5-40 GPM (19-150 LPM) (Pictured right)

**Automatic Nozzles**

Compatible with gasoline, diesel, E15, biodiesel to B20, and kerosene

N100DAU12	N	1" Red cover 5-25 GPM (19-95 LPM)
N100DAU12G	N	1" Green cover 5-25 GPM (19-95 LPM)
FRNA100DAU00	NA	1" Blue cover 5-25 GPM (19-95 LPM) (Rated to -40°F/-40°C)
N075DAU10	N	3/4" Green cover 2.5-14.5 GPM (9.5-55 LPM)
N075UAU10	N	3/4" Red cover 2.5-14.5 GPM (9.5-55 LPM)
FRNA075DAU10	NA	3/4" Blue cover 2.5-14.5 GPM (9.5-55 LPM) (Rated to -40°F/-40°C)

Manual Nozzles

Compatible with gasoline and diesel

FRHMN100S	N	1" Up to 20 GPM (75 LPM)
FRHMN075S	N	3/4" Up to 20 GPM (75 LPM)

Multi-plane Swivels

360° rotation | Rated to -40°F/-40°C

S100H1315	N	1"
S075H1314	N	3/4"

**Whip Hoses**

Resistant to cuts, abrasions, & weather

WH10012	N	1" x 12" 1" x 30.5 cm
WH07509	N	3/4" x 9" 3/4" x 22.9 cm

**Vent Caps**

FRTC	N	Cap only
FRTCB	N	Cap w/ 2" (5 cm) base

Breakaways

Non-reconnectable | Instant closing poppet check valve

B100F475	N	1"
B075F350	N	3/4"

Suction Pipes

Telescoping suction pipes available in metallic and non-metallic

1200KTG9099	N	Steel 1" x 20" to 34 1/2" 1" x 50.8 cm - 87.6 cm
30F1879	N	Polypropylene 1/2" x 21" to 36" 1/2" x 53.3 cm - 91.4 cm

FILL-RITE®

Accessories

For Gasoline / Diesel / B20 / E-15 / Kerosene

Filters

Particulate, Hydrosorb® & Aqua
Increase pump longevity

Available in 1" and 3/4" NPT
Suitable for all electric pumps

Compatible with gasoline and diesel

F4030PM0	N	Particulate Up to 40 GPM (151 LPM) 50 PSI (3.4 bar) 30 Micron
F4010PM0	N	Particulate Up to 40 GPM (151 LPM) 50 PSI (3.4 bar) 10 Micron
F1810PM0	N	Particulate Up to 18 GPM (68 LPM) 50 PSI (3.4 bar) 10 Micron
F1810PM1	N	Particulate w/ drain Up to 18 GPM (68 LPM) 50 PSI (3.4 bar) 10 Micron
F1810HM0	N	Hydrosorb Up to 18 GPM (68 LPM) 50 PSI (3.4 bar) 10 Micron
F1810PC1	N	Particulate w/ drain Up to 18 GPM (68 LPM) 50 PSI (3.4 bar) 10 Micron
F1810HC1	N	Aqua w/ drain Up to 18 GPM (68 LPM) 50 PSI (3.4 bar) 10 Micron
1210KTF7019	N	F1810HM0 filter w/ 1200KTG9075 filter head kit
1200KTF7018	N	F1810PM0 filter w/ 1200KTG9075 filter head kit
1200R0631	N	Hydrosorb for use with F1810HC1 clear bowl filter
1200R9146	N	Particulate for use with F1810PC1 clear bowl filter
KIT300FA	N	F4030PM0 filter w/ 700ACC7017 filter head kit



Filter Heads

700ACCF7017	N	1"
1200KTG9075	N	3/4"

Hoses

Internal spring guard
Stainless steel ground wire

Fuel-resistant Neoprene exterior
Suitable for all electric pumps

Available in 1" and 3/4" NPT

1" Models

FRH10012	N	12' 3.6 m
FRH10014	N	14' 4.3 m
FRH10020	N	20' 6 m
FRHA10020	NA	20' 6 m (Rated to -40°F/-40°C)

3/4" Models

FRH07512	N	12' 3.6 m (Pictured below)
FRH07514	N	14' 4.3 m
FRH07520	N	20' 6 m
FRHA07515	NA	15' 4.6 m (Rated to -40°F/-40°C)

UL listed Models

300F7773	N	1" x 12' 2.5 cm x 3.6 m
700F3135	N	3/4" x 12' 1.9 cm x 3.6 m



FILL-RITE®**115/230V AC Cabinet Systems**
For Gasoline / Diesel / B20 / E-15 / Kerosene**Cabinet Pump Systems****Flow 15 GPM (57 LPM)**1 1/4" inlet | 3/4" outlet
2" NPT or BSPT tank mount
Cast iron pump housing1/3 HP Motor
30-minute duty cycle
Anti-siphon ready**Included Accessories**

Nozzle boot | Nozzle retainer

FR702VR	N	115V AC, 60 Hz, Manual nozzle, 12' hose, 807C gallon meter
FR702VRU	N	115V AC, 60 Hz, 807C gallon meter <i>(Pictured right)</i>
FR702VRGU	N	220V AC, 50/60 Hz, 807C gallon meter
FR702VLRU	N	115V AC, 60 Hz, 807CL liter meter
FR702VELRU	B	220V AC, 50 Hz, 807CL liter meter
FRPA125		Pedestal kit, Fits FR702 Series and FR700 Series pumps

**Cabinet Meter Systems****Flow 40 GPM (151 LPM)**1" inlet | 1" outlet
Built-in junction box
Cast iron pump housingFor use with 300 of 700 remote pumps
Can be used with submersible pumps**Included Accessories**

FR902CR*	N	901C gallon meter
FR902CLR*	N	901CL liter meter <i>(Pictured right)</i>
FR902CRU	N	115V AC solenoid valve, 901C gallon meter
FR902CLRU	N	115V AC solenoid valve, 901CL liter meter



*Non-UL

Cabinet Pedestal Systems**Flow varies per system**50 psi / 3.4 bar
1" outlet

Cast iron pump housing

**Included Accessories**

Nozzle boot | Nozzle retainer

FR902DPU	N	40 GPM (151 LPM), 900CDP digital meter, 115V AC solenoid valve, Hammer arrestor <i>(Pictured above)</i>
FR302DPU	N	26 GPM (98 LPM), 900CDP digital meter, 300 series pump, Hammer arrestor <i>(DIESEL ONLY SYSTEM)</i>
FR102PHU	N	115V AC solenoid valve



FILL-RITE DEF™

NEW! DEF Pump Systems
For Diesel Exhaust Fluid (DEF) /
AdBlue® / Water

**DEF/ADBLUE® SYSTEMS
FROM THE LEADER
IN FUEL TRANSFER**

DF Series - DEF Transfer Systems

Flow 8 GPM (30 LPM)

1" BSPP x 3/4" Hose barb
12V DC or 120V AC systems
EPDM seals | Self-priming to 6'

30-minute duty cycle
38 psi / 2.6 bar max bypass
2-year warranty

12V DC | Included Accessories

1" x 3/4" Hose barb elbows | 1" x 3/4" Hose barb straight fittings | Worm gear hose clamps

DF012N	H	No additional accessories
DF012CMN520	H	Cage IBC bracket, manual nozzle, nozzle boot, 5' suction hose, 20' discharge hose
DF012CAN520	H	Cage IBC bracket, automatic nozzle, nozzle boot, 5' suction hose, 20' discharge hose
DF012CAN520-RP	H	Cage IBC bracket, automatic nozzle, nozzle boot, RPV dispense coupler, 5' suction hose, 20' discharge hose
DF012CAT520	H	Cage IBC bracket, TT10PB meter, automatic nozzle, nozzle boot, RPV dispense coupler, 5' suction hose, 20' discharge hose
DF012CAT520B	H	Cage IBC bracket, TT10PB meter, automatic nozzle, nozzle boot, RPV dispense coupler, 5' suction hose, 20' discharge hose, TT10 meter

120V AC | Included Accessories

1" x 3/4" Hose barb elbows | 1" x 3/4" Hose barb straight fittings | Worm gear hose clamps

DF120N	H	No additional accessories
DF120CMN520	H	Cage IBC bracket, manual nozzle, nozzle boot, 5' suction hose, 20' discharge hose
DF120DAN520	H	Drum bracket, automatic nozzle, nozzle boot, 5' suction hose, 20' discharge hose
DF120CAN520	H	Cage IBC bracket, automatic nozzle, nozzle boot, 5' suction hose, 20' discharge hose
DF120CAN520-RP	H	Cage IBC bracket, automatic nozzle, nozzle boot, RPV dispense coupler, 5' suction hose, 20' discharge hose
DF120CAT520	H	Cage IBC bracket, TT10PB meter, automatic nozzle, nozzle boot, RPV dispense coupler, 5' suction hose, 20' discharge hose
DF120CAT520B	H	Cage IBC bracket, TT10PB meter, automatic nozzle, nozzle boot, RPV dispense coupler, 5' suction hose, 20' discharge hose, TT10 meter



400B Series Electric Diaphragm Pumps

For Pesticides / Fertilizers / Mild Acids / Soaps / Water



400B Series Diaphragm Pumps

Flow 15 GPM (57 LPM)

1" inlet | 1" outlet NPT threads

10' suction lift

Santoprene diaphragms® | EPDM seals

*Hytrell diaphragms | Viton seals

15 psi / 1 bar

12V DC | Included Accessories

12' EPDM discharge hose | Ball valve | Hose barbs | Hose clamps

SS411BCEXP	B	Pump only *Accessories not included (CE compliant, Explosion-proof motor)
SS413BCEXPPG	N	2" F Camlock coupler w/F threads, 2" x 1" reducer bushing, 39" EPDM hose (CE compliant, Explosion-proof motor)
SS415B	N	Pump only *Accessories not included
SS415BX670	N	Pump only *Accessories not included
SS415BEXPX670	N	Pump only *Accessories not included (UL listed explosion-proof motor)
SS415BX731	N	Bracket on pump, *Accessories not included
SS415BX731PG	N	Bracket on pump, 2" F Camlock coupler w/F threads, 2" x 1" reducer bushing, 23"-40" poly telescoping suction tube
SS417B	N	Cap and spin-on collar for bung, 23"-40" poly telescoping suction tube
*SS419BX665	N	2" poly street elbow, Monsanto coupler, 23"-40" poly telescoping suction tube, pump support bracket (for use with Monsanto tanks)
SS420B	N	Nozzle hanger, 23"-40" poly telescoping suction tube
SS425B	N	W/ IBC Bracket and mounting hardware
SS435B	N	Short frame Chemtraveller, 825 meter, 9' EPDM suction hose, anti-drip tip, 1" F Camlock coupler w/M threads, 1" poly short nipple
SS435BCEXP	N	Short frame Chemtraveller, 825 meter, 9' EPDM suction hose, anti-drip tip, 1" F Camlock coupler w/M threads, 1" poly short nipple (CE compliant, Explosion-proof motor)
SS435BX675	N	Short frame Chemtraveller, 850 meter, 9' EPDM suction hose, anti-drip tip, 1" F Camlock coupler w/F threads, 1" poly short nipple
SS435BX700	N	Short frame Chemtraveller, 825 meter, 9' EPDM suction hose, anti-drip tip, 1" F Camlock coupler w/M threads, 1" poly short nipple (Gaskets and seals are EPDM)
SS435BX713	N	Short frame Chemtraveller, 9' EPDM suction hose, anti-drip tip (Includes fittings to pump from the top or bottom of a tank or tote)

400B Series Continued

12V DC | Included Accessories

12' EPDM discharge hose | Ball valve | Hose barbs | Hose clamps

SS435BEXPX703	N	Short frame Chemtraveller, anti-drip tip, no hoses or hose clamps included <i>(UL listed explosion-proof motor)</i>
SS445B	N	9" GemCap, 825 meter, 28.5"-45.5" poly telescoping suction tube w/ bellows, check valve, built-in recirculation valve
SS445BX700	N	9" GemCap, 825 meter, 28.5"-45.5" poly telescoping suction tube w/ bellows, check valve, built-in recirculation valve <i>(Gaskets and seals are EPDM)</i>
SS445BX727	N	9" GemCap, 825 meter, 28.5"-45.5" poly telescoping suction tube w/ bellows, check valve, built-in recirculation valve

115V AC | Included Accessories

12' EPDM discharge hose | Ball valve | Hose barbs | Hose clamps

SS460B	N	Nozzle hanger, 23"-40" poly telescoping suction tube
SS460BX674	N	Nozzle hanger, 23"-40" poly telescoping suction tube
SS460BX731	N	Bracket on pump, nozzle hanger, 23"-40" poly telescoping suction tube
SS460BX731PG	N	Bracket on pump, 2" F Camlock coupler w/F threads, 39" EPDM hose, 23"-40" poly telescoping suction tube,
SS465BEXP	N	Tall frame Chemtraveller, 825 meter, 9' EPDM suction hose, anti-drip tip, 1" F Camlock coupler w/M threads, 1" poly nipple <i>(UL listed explosion-proof motor)</i>
SS465BX713	N	Tall frame Chemtraveller, anti-drip tip, no hoses or hose clamps included
SS470B	N	W/ IBC Bracket and mounting hardware

Electric Diaphragm Pumps

Compatible with Diesel / Gear & Motor Oils

Flow 15 GPM (57 LPM)

1" inlet | 1" outlet NPT threads

15 psi / 1 bar

Hytrex diaphragms | NBR seals

10' suction lift

Included Accessories

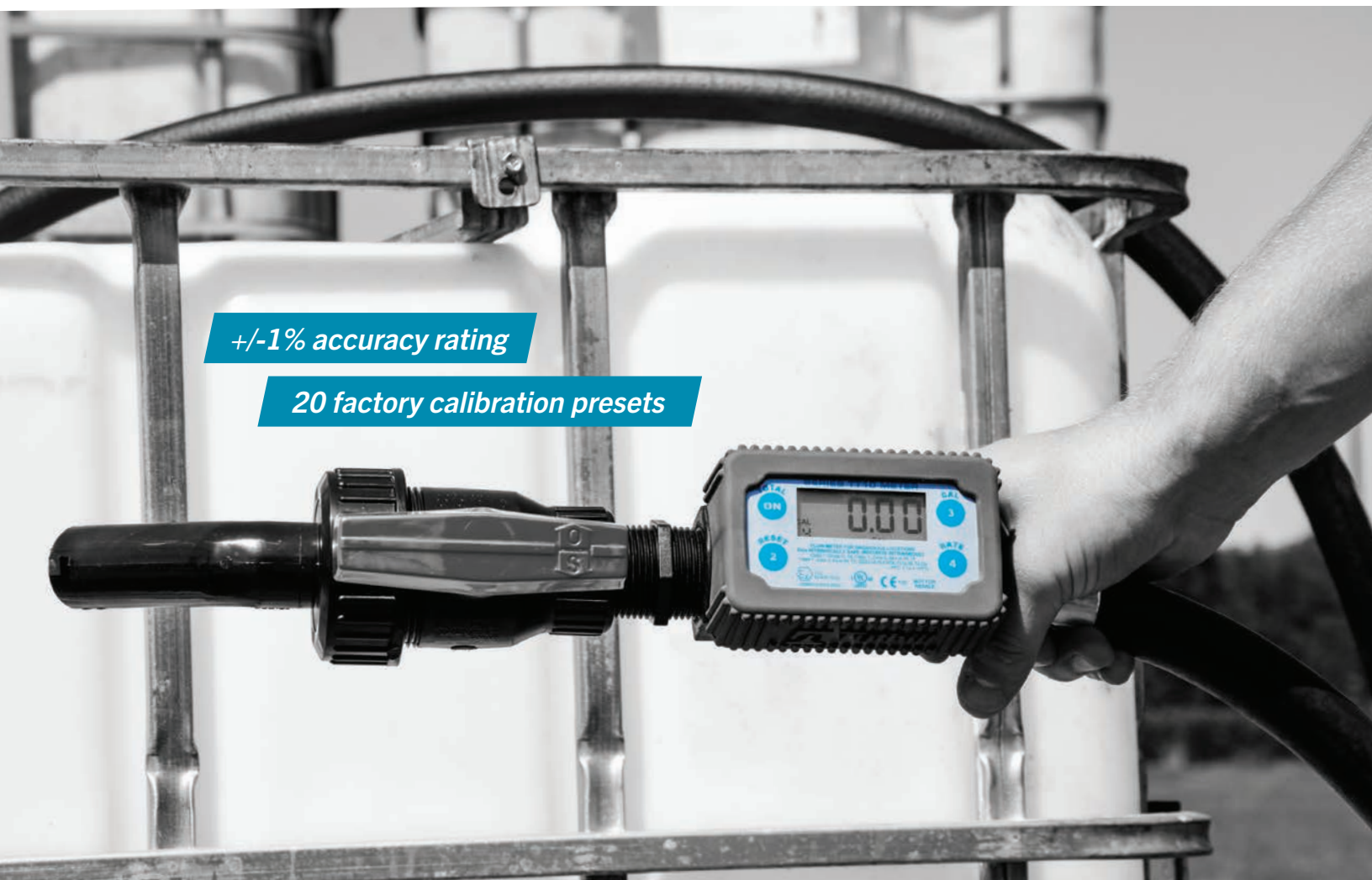
12' hose | 23"-40.5" steel telescoping suction pipe

FR405BEXPX054	N	12V DC *Accessories not included <i>(UL listed explosion-proof motor)</i>
FR410B	N	12V DC Manual nozzle
FR410BEXP	N	12V DC Manual nozzle
FR450B	N	115V AC Manual nozzle <i>(Pictured right)</i>

24V DC | Included Accessories

FR205B	N	Pump only *Accessories not included
FR205BX054	N	Pump only *Accessories not included
FR210B	N	12' hose, manual nozzle, 23"-40.5" steel telescoping suction pipe





In-line Digital Turbine Meter

For DEF / AdBlue / Anti-freeze / De-icing Fluid /
Non-Potable Water / Chemicals

TT10 Series In-line Digital Turbine Meters

Flow 2-35 GPM (8-132 LPM)

+/-1% accuracy rating
1" inlet | 1" outlet NPT or BSPP threads
Impact damage resistance

User replaceable batteries (2 AA)
Easy field calibration | Memory backup
Install in-line, hose-end, or at the pump

TT10PN	N	Engineered polymer meter only
TT10PB	B	Engineered polymer meter only





800 Series Digital Meters

For Pesticides / Fertilizers / Diesel / DEF / AdBlue / Crop, Gear & Motor Oils / Mild Acids / Soaps / Water

Flow 2-20 GPM (7-75 LPM)

+/-0.5% accuracy rating
1" inlet | 1" outlet NPT or BSPP threads
1-step calibration

Glass-filled polypropylene housing
Waterproof, corrosion resistant body
3/4" BSPP threads



Included Accessories | Max Pressure

825	N	Meter only 125 PSI (8.6 bar) (2) AA battery powered
825X700	N	Meter only, EPDM seals 125 PSI (8.6 bar) (2) AA battery powered
825D075BSPPS	B	3/4" BSPP threads 125 PSI (8.6 bar) (2) AA battery powered
825P	N	4-20 mA analog output, Pulse output, Power and signal cable 125 PSI (8.6 bar) (2) Lithium CR2032 batteries
850	N	Meter only 120 PSI (8.27 bar) (2) AA battery powered
850P	N	4-20 mA analog output, Pulse output, Power and signal cable 120 PSI (8.27 bar) (2) Lithium CR2032 batteries (Pictured below)

Series 850P (Bulk Air Detector Model)

The 850 series meter offers all the great features of the 825, but also incorporates a mass air sensor that distinguishes between fluid and air. As a result, the 850 stops metering when you finish emptying a container, improving the accuracy by not metering the air. The "P" designation in the model number tells you this meter has pulse output, making it an excellent choice for batching, use with FMS and PLC systems, and remote monitoring.



FILL-RITE®

Hand Pumps

For Hydraulic, Engine, & Gear Oils / Diesel / Anti-Freeze / Mild Acids / DEF / AdBlue / Degreasers

For drums & barrel mounting

used in farm, fleet, or construction

Air Operated Hand Pump

Flow 6.5 GPM (24.6 LPM)

2" NPT bung adapter
100 psi / 6.8 bar max pressure

FRAP32V  Telescoping suction pipe

Hand Lever Pump

Flow 11oz/stroke

2" NPT bung adapter
Polypropylene construction

FRHP32V  Telescoping suction pipe

Accessories

For Hydraulic, Engine, & Gear Oils / Diesel / Anti-Freeze / Mild Acids / DEF / AdBlue / Degreasers

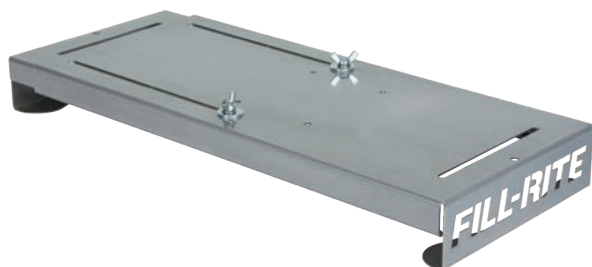
Mounting Options

Stainless steel
For totes, drums, and barrels

KITDFCB Cage IBC bracket, nozzle reservoir w/bracket

KITDFDB Drum bracket (Pictured below), nozzle reservoir w/bracket

KIT180MPPS IBC mounting plate



Accessories continued

Nozzles

Stainless steel or Non-metallic construction

FRDFM075C	H	DEF manual nozzle
FRDFA075B	H	DEF automatic nozzle
FRDFA075A	B	Premium DEF automatic nozzle (<i>Stainless steel</i>)
KITDFMN	H	DEF automatic nozzle with TT10PB meter assembly

Suction Pipes

30F1879	N	1/2" x 23"-40 1/2" telescoping poly suction pipe
1200KTG7743	N	1" x 43" 3-piece PVC suction pipe
KIT180DTPS	H	Non-metallic dispense coupler and suction tube - 3/4" hose barb

Hoses

EPDM material
3/4" Bare ends

KITDFH05	5' 1.5 m (<i>Suction hose</i>)
KITDFH20	20' 6 m

Misc.

Accessories to accompany chemical dispensing systems

KITS05NDEF	Poly manual nozzle w/stainless steel spout, 8' 2.4 m hose, 6' 1.8 m suction hose
KIT180MAPS	Automatic nozzle, 12' 3.6 m hose, 6' 1.8 m suction hose, stainless steel mounting plate
KIT180MAMPS	825 digital meter, automatic nozzle, 12' 3.6 m hose, 6' 1.8 m suction hose, stainless steel IBC tote mounting plate
KITHA32V	8' 2.4 m hose w/ball valve tap
KITHA32VMN	8' 2.4 m hose, polypropylene manual nozzle w/stainless steel spout, hose bracket
KITDFNB	Plastic nozzle reservoir, nozzle reservoir bracket
MMNM075RPV	Non-metallic, 4-pin RPV dispense coupler
MMSS075RSV	Stainless steel 4-pin RSV dispense coupler
MMSS075EPV	Stainless steel 3-pin EPV dispense coupler



FILL-RITE®

www.fillrite.com

SOTERA®

www.sotera.com



deal with
confidence

**NATIONAL ENERGY
EQUIPMENT INC.**

Toll Free National Directory:
1.866.574.5100

www.nee.ca

Email: info@nee.ca

VANCOUVER	NANAIMO	ECKVILLE	EDMONTON	CALGARY	SASKATOON	REGINA	WINNIPEG
778.588.7635	250.753.4188	403.746.3677	780.468.4454	403.735.1103	306.665.0223	306.721.1030	204.632.0043
THUNDER BAY	CAMBRIDGE	WYOMING	MISSISSAUGA	MONTREAL	MONCTON	DARTMOUTH	ST. JOHN'S
807.285.0392	519.622.7363	519.845.0058	905.670.8863	514.355.2366	506.861.1010	902.468.7342	709.747.0015